




Thrax

Audiophile Products

A close-up photograph of a speaker driver, showing a circular tweeter or midrange driver mounted on a light-colored, possibly aluminum, baffle. The driver is centered in the upper right portion of the frame, with a dark, conical horn-like structure visible to its left. The background is dark and out of focus.

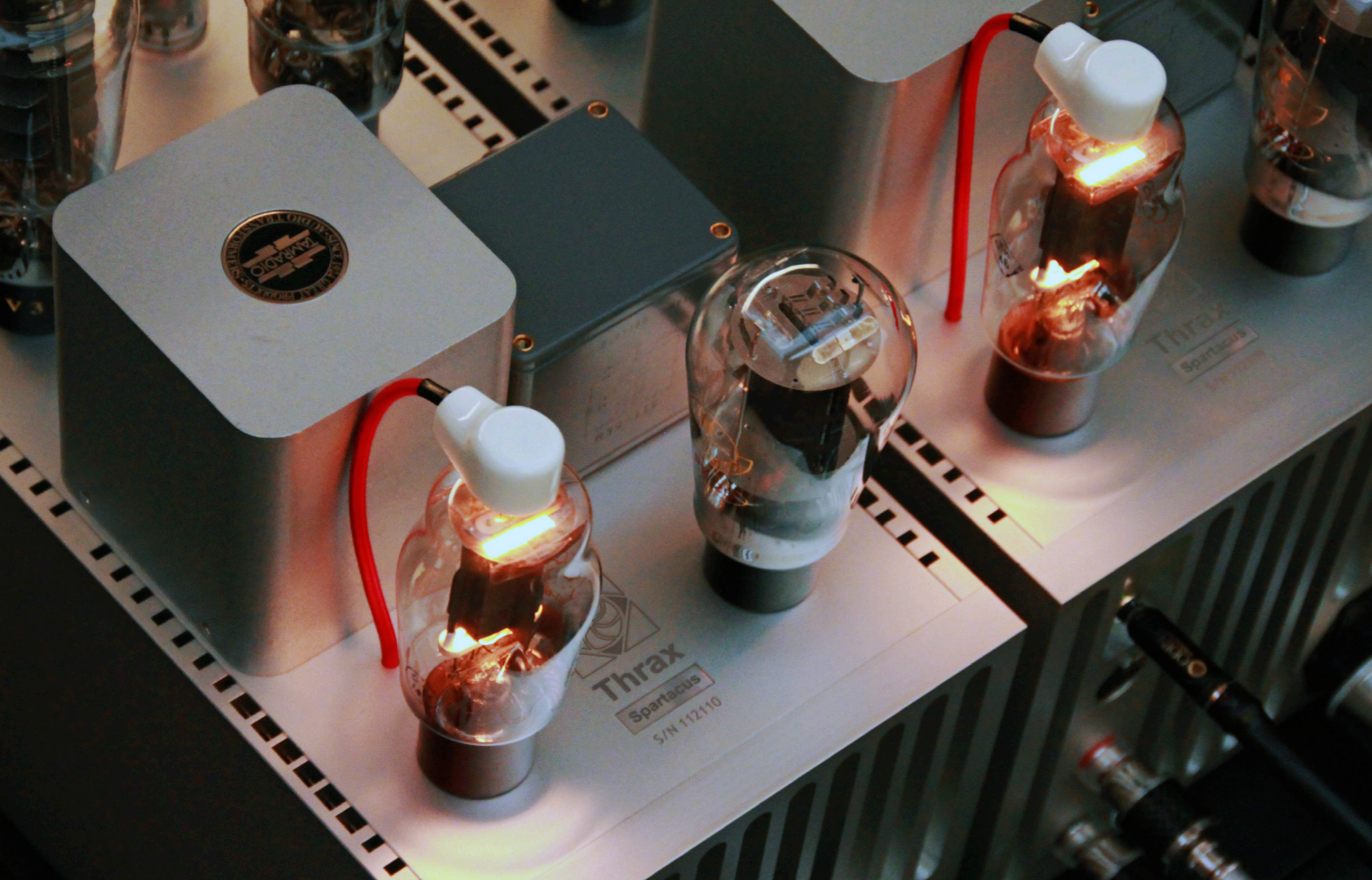
Thrax is a specialist audiophile systems manufacturer.

Purveyor of the finest sounding components for any setup.

Each component has been conceived to perform a particular task in the overall system and is executed to deliver performance above expectations, setting a benchmark for others to aspire to.

Thrax is a zero compromise company, we firmly believe there can be only one level of performance worth pursuing - true reference level. We don't make a version of what is already on the market, all our solutions are non standard and original in every respect. So why we have multiple amplifiers if there can be only one? Simple - to drive optimally different types of loudspeakers. Loudspeakers vary vastly in their optimal drive method and we have developed the best match for each, covering all from electrostats to horns. No universal solution exists.

True to our beliefs we use the works and experience of the very best in each field and implement that knowledge in our products. It took us a lot of time and many tests to determine where the truth lies, now is your turn. There is no trick, no magic - it is a complex function of knowledge, attention to detail, common sense and an open mind that gets you there.



Our Technology

Modular constructions - breaking each unit into functional blocks and designing each one of those blocks to deliver maximum performance and it's operation to be independent of all other modules.

Advanced power supply design with constant current consumption - no dynamic load variation means no modulation of the supply voltage and no AC in the power supply path. No need for large capacitor banks introducing unwanted artifacts.

Ultra low noise voltage references used in our signature shunt regulators.

Separate PSU for each subsystem - complete isolation.

Transformer inputs and outputs - fully isolated circuitry and true balanced interface. Each stage is an island unaware of what happens outside the box. No interference and predictable performance.

Simplest possible signal path - minimum number of signal handling stages. No buffers, level shifters, feedback, feed forward or any other type of unnecessary complication.

Floating inputs and outputs - suitable for large systems powered from different outlets. Programmable ground connection between units and ground plane switching on inputs and outputs.

Unique compound silicon devices for high voltage operation coupled with vacuum tubes for linearity.

Vibration control of all parts in the assembly with interlocking plates and absorbing material to kill any unwanted resonances in the chassis.

Microprocessor controlled reed relays for signal switching and function selection.

Simple high visibility displays and intuitive user interface.

Constant impedance equalization - provides uniform loading to preceding stage preventing coloration and timbre shift of original sound.

Custom ring diaphragm drive units and ultra short horn system - unprecedented resolution and clarity at very high levels.

Special Nickel and Cobalt alloys used for screening and isolation of critical parts.

Our units use optimal (higher) interface levels between the components allowing for higher system signal to noise ratio and not losing your signal to noise.

Flexibility - all products are designed to be integrated in any audio system. Multiple interface levels and connector types. Advanced features and microprocessor control.

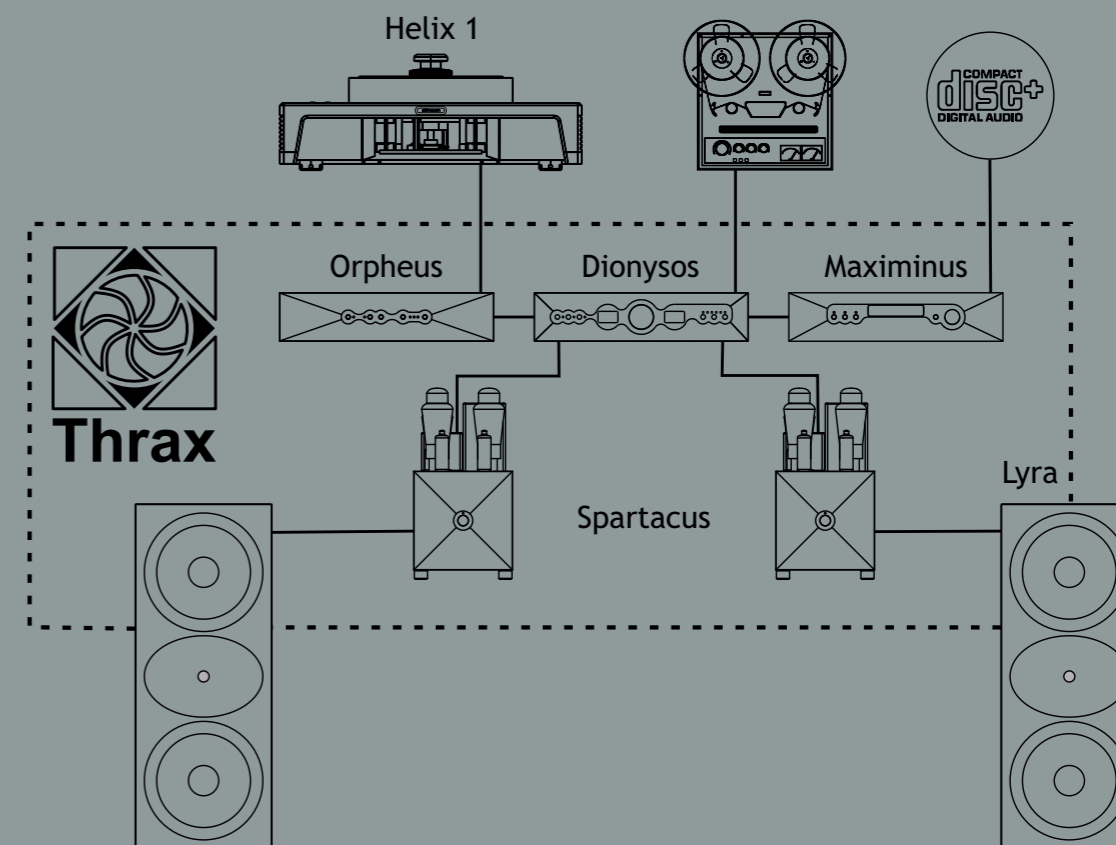
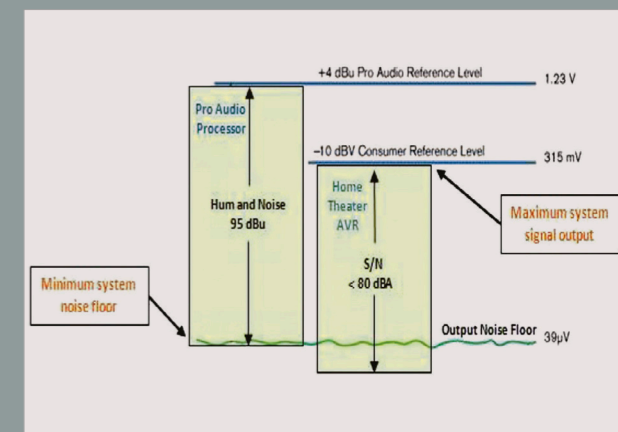
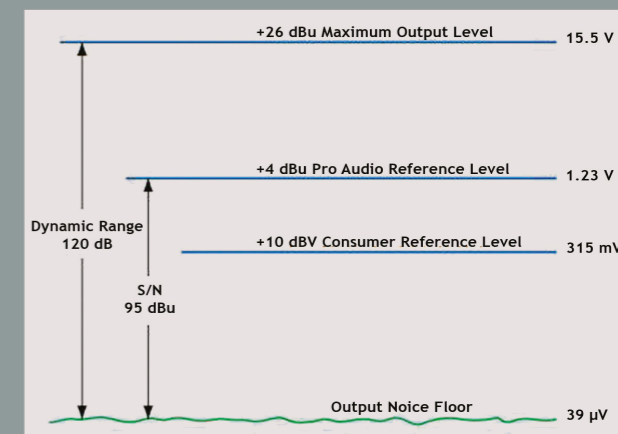
Family styling - sonically and aesthetically. Matched to each other for best performance and outlook. Signature sonic character.

Future proof - our products are ready for the upcoming hi-resolution formats. Firmware updates will be provided when needed.

Vibration absorbing carbon doped plastic feet to prevent static electricity and not to scratch your furniture.

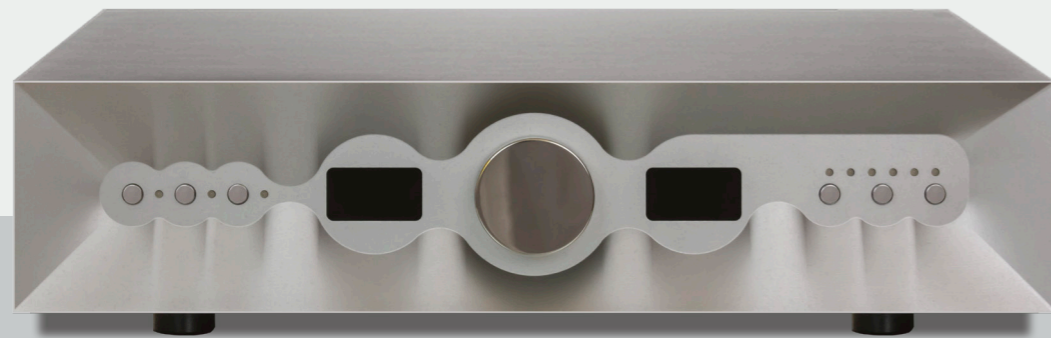
Clean lines and superb craftsmanship giving the units timeless design and identity.

Built to last using extra long life components and internally designed for serviceability.



Thrax Dionysos

Vacuum Tube Control Amplifier



The control amplifier is the centerpiece of each high-end audio system. Being responsible for source selection, signal conditioning and volume control. It matches the output of your source to the input of your power amp.



Features

- Accepts both balanced and unbalanced input signals on RCA and XLR connectors.
- Switches ground plane with input selection preventing ground loops.
- Programmable grounding arrangement for large systems.
- Dual balanced and unbalanced output for bi-amp
- Home Theatre bypass feature for integration in Home Cinema systems
- Programmable absolute phase per input and accessible via remote control
- Stepped volume control for perfect repeatability of level setting
- Inductive volume control for best sound quality
- Shunt regulated constant current PSU for lowest noise and best dynamic behavior
- Choke input rectifier for no switching noise
- Custom vacuum encapsulated signal relays for ultimate sound and reliability
- Modular construction
- Microprocessor controlled
- Interlocking solid aluminum chassis.

Technology

The input of our pre-amplifier uses a transformer providing optimal loading for the source component to develop it's full potential, allowing it to extract the maximum amount of information while keeping all noise picked up on the way out of the signal chain.

The input transformer provides complete isolation of the source components from the system. Rejects common mode signals much better than any active solution, stops EMI/RFI and ensures truly balanced differential input. All while being the optimal load for the source.

The volume control of a pre-amplifier has to adjust the level of the input signal to the value required by the power amp without burying in noise the low level information and transferring enough power to properly drive the amplification stage without affecting it's operation. Our solution is fundamentally different and as simple as it gets. We use the same input

transformer with various winding ratios and we switch between them. Instead of throwing away part of the signal our solution behaves like an audio gearbox, transferring all the power of the incoming signal at the desired level.

The gain stage is realized by the use of a single low noise tube loaded with a step down transformer. Making the output of the control amplifier low impedance, DC free, truly balanced, isolated from noise sources and decoupled from the other components in the system. Providing an absolute optimum driving signal for the following power amplifier's input stage.

To further reduce the vanishingly low noise floor of the unit below certain volume setting the active circuit is disabled and the attenuator is connected directly to the output providing low impedance noise free signal.

Specifications

Inputs

- 4 pair unbalanced RCA
- 2 pair balanced XLR

Output

- 2 pair unbalanced RCA
- 2 pair balanced XLR

Attenuation steps

- 32

Volume Control Range

- Minimum gain -46dB
- Maximum gain +18db

Power supply

- 115 or 230 V

Power consumption

- 45W

Weight

- 15Kg

Dimensions

- 432Wx400Dx120H mm

Finish

- Black or Silver anodized aluminum

Tube compliment

- 1 x 6H6Π(6N6P)



Thrax Orpheus

Phono Preamp with LCR RIAA Equalizer



The phono preamplifier's task is extracting the last bit of information from the cartridge by providing optimal loading while maintaining very high noise immunity. After vastly amplifying the input signal and applying the standard RIAA equalization it interfaces at line level with the rest of the system via balanced or unbalanced lines.

Features

- Built in step up transformer
- Constant impedance LCR equalization
- Programmable gain and loading
- Accepts both balanced and unbalanced input signals on RCA and XLR connectors.
- Switches ground plane with input selection preventing ground loops.
- Programmable ground arrangement for large systems.
- Balanced and unbalanced output
- Programmable absolute phase per input
- Shunt regulated constant current PSU for lowest noise and best dynamic behavior
- Choke input rectifier for no switching noise
- Custom vacuum encapsulated signal relays for ultimate sound and reliability
- Modular construction
- Microprocessor controlled
- Interlocking solid aluminum chassis.

Technology

Orpheus uses two tube gain stages with zero feedback. Each gain stage operates on it's own and there are no feedback loops enclosing them. To guarantee the highest performance we take care of a number of things often overlooked.

At the RCA input we switch the ground plane when switching between inputs so there are no hum loops and induced ground noise for the D3a input tube.

The D3a is loaded by the custom passive LCR RIAA correction. This arrangement combined with constant current source guarantees long term stability during the service life of the tube and isolates any noise that might have made it's way through the power supply.

The use of LCR equalization is vastly different from the often used equalization networks in the feedback loops or the plain passive RC networks.

The LCR filter being a constant impedance to the

source allows the input stage to behave the same way at low and high frequencies and at any level.

All other solutions have varying impedance. LCR has unmistakable sonic purity and textural richness. The equalization in Orpheus is taken to the extreme by being executed with custom coils wound with OFC wire and silver foil capacitors.

The output stage is another super low noise tube loaded by a transformer to bring the signal up to the necessary level and provide complete isolation of the sensitive LCR circuit from the following components. The EQ filter is out of any gain loops and sits between the two gain stages protected from any unpredictable influences at it's input and output.

Orpheus is one of the quietest tube phono pre-amplifiers and the fact that this is achieved in a single chassis is remarkable.

Specifications

Inputs

- 2 x RCA or XLR

Output

- RCA or XLR

Gain

- 40/58/64db

Power supply

- 115 or 230 V

Power consumption

- 50W

Weight

- 15Kg

Dimensions

- 432Wx400Dx120H mm

Finish

- Black or Silver anodized aluminum

Tube compliment

- 2 x D3a amplification
- 2 x 6C4 amplification



Thrax Maximinus

Universal DSP controlled R2R ladder DAC



This is the original multi-bit DAC concept with the most sophisticated implementation and highest precision. We based the solution on the best technology available and applied our knowledge and experience taking the design to the extreme.

Features

- Multibit conversion
- 1ppm resolution
- DSD64 and DSD128 support
- 8 inputs (6 +2 optional)
- Balanced outputs on RCA or XLR (selectable)
- Transformer isolated output
- No I/V conversion
- No filtering after DAC
- Total galvanic isolation of internal circuits from outside world
- Optional streaming client
- Internal clock generators
- Selectable re-cklocking
- Selectable up-sampling
- Selection of 4 digital filters
- Firmware upgradable
- Modular design for field upgrades
- 32/384 Asynchronous USB interface
- Sealed solid aluminum enclosure



Technology

Maximinus uses a concept called R2R ladder. This is a resistor matrix that is switched for the various output levels outputting a fraction of an internal reference (much like a volume control). The resolution achieved is 1ppm. This is immediately audible in the low level texture and tone of instruments. To take advantage of the available resolution and bandwidth we had to implement a state of the art digital pre-processing. This is a suite of algorithms that would apply digital filtering and up sampling to the incoming data stream. After processing a 16bit 44.1kHz CD data stream is converted to 32bit 352.8kHz data fed directly to the DAC. This further improves low-level resolution and the sense of space. The process is all user controllable and defeatable for purist and non-oversampling use. The integrated DSP supports DSD stream decoding. To keep up with tech development we have internal slots for options to be used when the time calls for it.

We use transformer or optical decoupling of all inputs, meaning that contaminated ground connection and other interfering signals don't make it to the inside of the unit.

We have no output filter at the DAC output providing the cleanest possible output signal, just a transformer matching the impedance of the converter resistors to the outside world and isolating them from external influence.

We use completely separate power supplies for each block in the DAC: the Converters, Clock, DSP and Control logic all with floating ground planes and our unique constant current regulator technology.

Then the whole assembly is mounted in a solid aluminum case for vibration damping and EMI/RFI screening following the same construction concept as our pre-amplifiers.

Specifications

Inputs

- 2 x COAX (RCA)
- 2 x AES/EBU (XLR)
- 2 x TOSLINK (optic)
- 1 x USB (optional)

Output

- 1 pair unbalanced RCA
- 1 pair balanced XLR

Power supply

- 115 or 230V

Power consumption

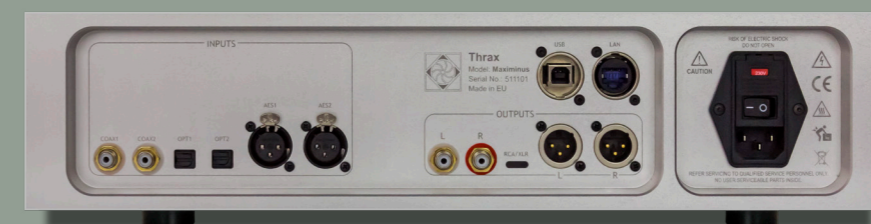
- 30W

Weight

- 12Kg

Dimensions

- 432Wx400Dx120H mm



Thrax Heros

Class A Hybrid Power Amplifier



Heros is a real alternative to tube amplification. With it's unusual hybrid transformer loaded circuit, it is essentially is a "solid tube" design.

Features

- Tube amplifier architecture with simplest signal path
- Transformer coupled input and output
- JFET/MOSFET cascode output devices
- Silicon Carbide diodes in power supply
- Microprocessor control
- Zero negative feedback
- Selectable gain
- Selectable speaker impedance
- Audiophile 5687wa tube used
- Fully balanced differential operation
- Both RCA and XLR inputs
- Compact chassis built like a tank
- 100W Pure ClassA power



Technology

Based on a compound device in differential push pull arrangement with transformer loaded output stage. It achieves almost double the efficiency of a normal Solid State Class A design.

Inherently DC free input and output and many other benefits are taken advantage of in our implementation.

A fully differential architecture using an input phase splitting transformer and summing the signal back at the push pull output transformer completely isolates the gain devices of the amplifier from any external influences.

The design being fully differential is immune to power supply noise and cancels any common mode disturbances and even harmonics.

The power supply for the output stage uses a new breed of rectifier diodes made of a new material called Silicon Carbide. They have no reverse current

and switching losses.

When properly applied the rectifier produces no EMI/RFI in the chassis. The result is an amplifier free of grain and fuzziness in the highs, giving new meaning to transparency and tone. We use the well known 5687WA audiophile tube and the highest grade audio transformers.

The whole chassis is a heat-sink to accommodate the moderate amount of heat generated. Heros is the most compact 100 watt class A amplifier available.

The chassis is designed to provide a vibration free structure to house the components. All the electronics are enclosed in separate compartments to stop interference between components.

Blending this with stylish aesthetics produced a beautiful metal sculpture simply known as Heros.

Specifications

Inputs

- 1 unbalanced RCA
- 1 balanced XLR

Output Power

- 100W in 4Ω/8Ω

Gain

- 15-20db

Power supply

- 115 or 230 V

Power consumption

- 230W

Weight

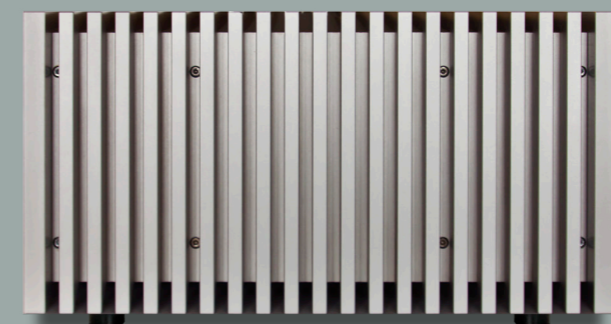
- 30Kg

Dimensions

- 210Wx400Dx230H mm

Tube compliment

- 1x 5687 amplification

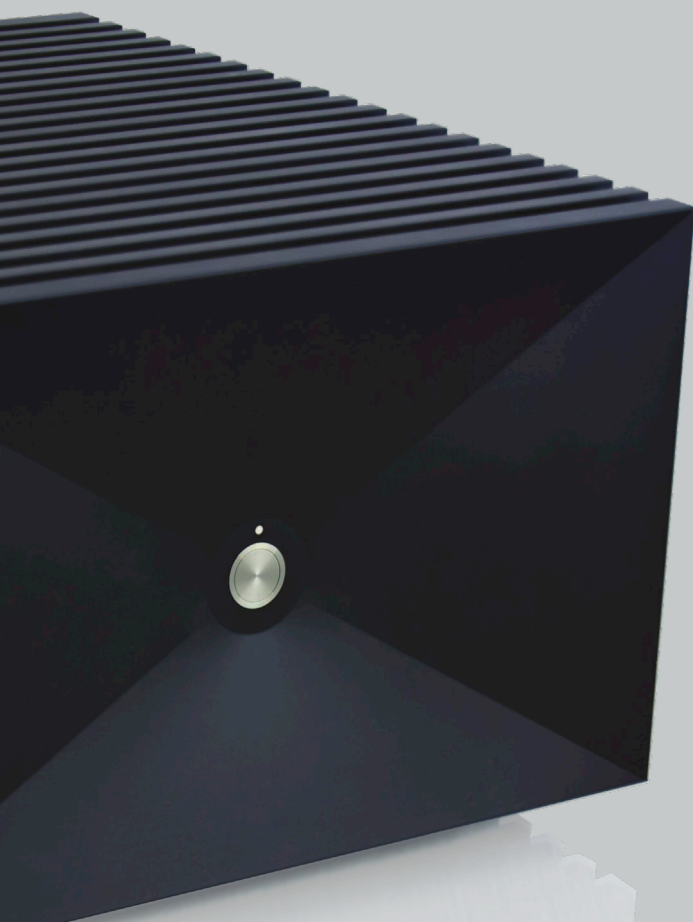


Thrax Teres

Transformer Coupled Hybrid Power Amplifier



Teres delivers tube clarity and tone with real might and power.
Unusual but true...



Features

- Tube/Fet hybrid architecture with simplest signal path
- Interstage transformer coupled
- Extra long life input tube
- Shunt regulated constant current power supply
- JFET/MOSFET cascode output modules
- Solar cell based bias control of output stage
- Silicon Carbide diodes in power supply
- Special lower inductance screened power transformer
- Microprocessor control
- Both RCA and XLR inputs
- Solid chassis built like a tank
- Available as Monoblock or Stereo



Technology

Single ended tube input stage loaded with a phase splitting transformer controlling 2 separate single ended amplifiers running out of phase for output. There is no output transformer in our arrangement but the output signal sums in the connected load.

The tube handles all the voltage gain needed. It uses a new generation or our choke rectified shunt regulated power supply ensuring optimal and stable noise free operating point.

The output stages power JFET cascodes form a bridge that when unbalanced by the input signal via the 2 transformer windings restores balance by adjusting current conduction through the load. The 2 output stages actually enclose the load in their control loops and try to correct each other's errors reducing the distortion to negligible amounts. Leaving only the "character" of the input stage while being able to drive any load.

Not sharing a common reference point apart from the load itself makes the output stage self correct for any error produced. Result is an amplifier capable of extreme power handling while delivering exquisite smoothness and low level resolution.

The driver stage being isolated by the interstage transformer is not influenced in any way by the output stage behavior maintaining tone color and resolution at all powers and loads consistent.

Having the output stages floating around the load prompted for the use of a unique biasing technique powered by solar cells. This was the quietest galvanically isolated power we could come up with. Using opto-electrical conversion we control the bias by adjusting light intensity in the control circuit.

Teres is an example of modern technology solving age old problems allowing us to go a step beyond.

Specifications

Inputs

- 1 unbalanced RCA
- 1 balanced XLR

Outputs

- 250W in 8Ω
- 350W in 4Ω

Power supply

- 115 or 230 V

Power consumption

- Max.700W

Weight

- 35Kg

Dimensions

- 340Wx400Dx230H mm



MONO



STEREO

Thrax Spartacus

Directly Heated Triode Power Amplifier



Spartacus is a statement.

A masterpiece demonstrating how modern thinking applied to Directly Heated Triodes with advanced magnetic materials and a classic concept eclipses all other approaches.

It is an engineering overkill in all aspects understated by the compact chassis.

A rebel in the world of "good enough"



Features

- Custom current production tubes for long life
- KR PX25 input/driver tube
- EML 520v3 output tubes
- 60w for ample power reserves
- Low noise for subtle dynamics
- Current sourced Shunt regulators on output and driver for stable power allowing explosive dynamics and transparency even on the hardest loads
- Transformer input and output for galvanic isolation
- Auto bias for compensation of tube ageing and correct operation
- Microprocessor controlled operation for safety
- Special filament heating circuit for harmonic richness and tube protection
- Selectable gain and speaker impedance for interoperability
- Highest quality torque binding posts protecting your cables
- No electrolytic capacitors in HV power supply for no ageing



Technology

Spartacus features one of the simplest possible signal paths with absolute zero feedback (wire-vacuum-wire-vacuum-wire). To achieve simplicity while delivering exemplary performance, each device in the signal path had to be the best possible.

Emission Labs and KR Audio manufacture a special breed of tubes called Directly Heated Triodes. They are the most linear amplifying devices and some of the very best audio tubes ever made. It is a fact that the distortion of triode vacuum tubes compared to solid-state devices is orders of magnitude better. Apart from the low distortion level, the type of distortion they produce is a consonant 2nd harmonic.

To go further we employ a technique to cancel the negligible distortion they would generate by running

two of them out of phase to cancel each other's distortion.

For this to work we designed a driver stage that would supply the two output tubes with exactly the same signal in phase for one and out of phase for the other by using another super linear DHT the PX25. It is loaded with a perfectly symmetrical phase split transformer with independent windings providing separate bias to the output tubes preventing any interaction. Our proprietary ultra low noise current sourced shunt regulator makes sure nothing moves unless it is supposed to. Not a popular approach at the voltages and currents involved as is extremely difficult to make. But infinitely rewarding when done. The most linear DHT tubes have considerably low voltage gain, so a step-up input transformer takes care of that.



Specifications

Inputs

- 1 unbalanced RCA
- 1 balanced XLR

Output Power

- Up to 70W in 4Ω or 8Ω

Power supply

- 115 or 230V

Power consumption

- 380W

Weight

- 35 Kg

Dimensions

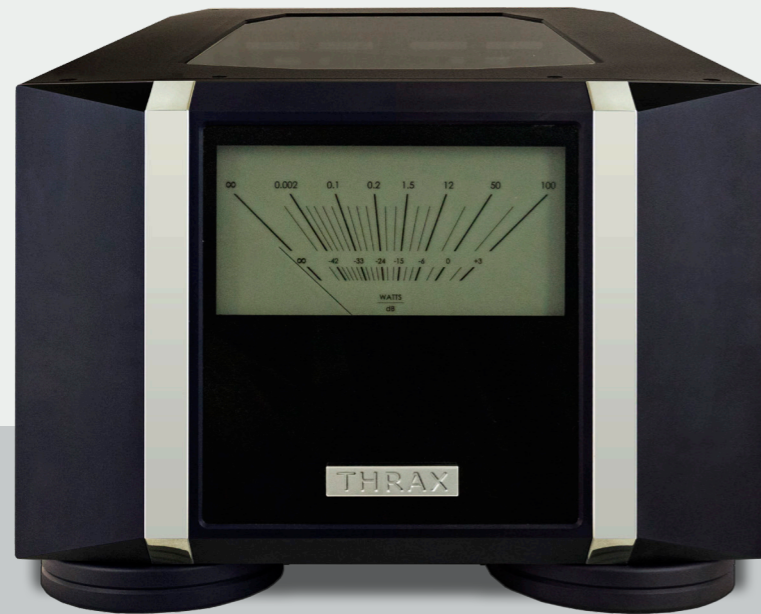
- 210Wx440Dx420H mm

Tube compliment

- 1x PX 25 amplification
- 2x EML520B-V3 amplification
- G-811 shunt regulator
- SG-13P voltage reference
- 2 x 6D22S rectifier

Thrax Spartacus 300

Pure 300B Power Amplifier



Spartacus 300 is a statement.

A masterpiece demonstrating how modern thinking applied to Directly Heated Triodes with advanced magnetic materials and a classic concept eclipses all other approaches. It is an engineering overkill in all aspects based on the legendary Western Electric 300B tube. It used six 300B tubes in 2 stages to deliver 50W of pure class A triode sound.



Features

- Custom current production tubes for long life
- 50w for ample power reserves
- Low noise for subtle dynamics
- Current sourced 300B Shunt regulator for stable power allowing explosive dynamics and transparency even on the hardest loads
- Transformer input and output for galvanic isolation
- Auto bias for compensation of tube ageing and correct operation of any 300B
- Microprocessor controlled operation for safety
- Special filament heating circuit for harmonic richness and tube protection
- Highest quality torque binding posts protecting your cables



Technology

The input is a 300B tube driving 4x300B tubes in the output stage and a shunt regulator based on yet another 300B tube makes sure all signal currents go through 300B tubes with no capacitor in sight.

Now for the first time you can actually hear what a 300B really sounds like and prepare to be amazed. Complimented by the finest nano-crystalline core output transformer, nano-crystalline choke power supply it really redefines tube amplification.

Spartacus features one of the simplest possible signal paths with absolute zero feedback (wire-vacuum-wire-vacuum-wire). To achieve simplicity while delivering exemplary performance, each device in the signal path had to be the best possible.

The legendary 300B tube was chosen. They are the most linear amplifying devices and some of the very best audio tubes ever made. It is a fact that the distortion of triode vacuum tubes compared to solid-state devices is orders of magnitude lower. Apart from the low distortion level, the type of distortion they

produce is a consonant 2nd harmonic only. To go further we employ a technique to cancel the negligible distortion they would generate by running two of them out of phase effectively canceling each other's distortion.

For this to work we designed a driver stage that would supply the two output tubes with exactly the same signal in phase for one and out of phase for the other by using another 300B. It is loaded with a perfectly symmetrical phase split transformer with independent windings and screening providing separate bias to the output tubes preventing any interaction. Our proprietary ultra low noise current sourced shunt regulator makes sure nothing moves unless it is supposed to. Not a popular approach at the voltages and currents involved as is extremely difficult to make. But infinitely rewarding when done. The most 300B tubes have considerably low voltage gain, so a step-up input transformer takes care of that. Look no further as there is no commercially available product coming close to Spartacus 300.

Specifications

Inputs

- 1 balanced XLR

Output Power

- 50W pure class A

Power supply

- 115 or 230V

Power consumption

- 450W

Weight

- 55 Kg

Dimensions

- 440Wx540Dx300H mm

Tube compliment

- 6x EML300B



Thrax Ares

Modular Audiophile System



A single chassis audiophile system with the sound you want and the features you need. ARES is a complete solution for your home audio needs, just add speakers.

Features

- Two true mono power amplifiers with independent power supplies
- Unique non switching output stage behaving like Class A
- Single ended Class A driver delivering liquidity and texture associated with the best of tube amplifiers.
- Absence of global feedback
- Regulated supplies of the drivers maintaining exemplary transparency and speed at all levels.
- In basic configuration ARES could be used as a power amplifier
- Fully balanced relay selector and discrete resistor volume control
- Digital input board supporting ALL current digital interfaces
- RIAA input module for MM/MC cartridges

Technology

ARES is built with the building blocks of the last high-end audio systems. All sharing the same chassis. No cables, no component mismatch, no lack of synergy, no multiple remotes.

With analog replay growing in popularity the addition of our new RIAA module to the ARES input board converts the first RCA input to a Moving Magnet and Moving Coil phono stage. This module once in place enables gain settings to the configuration menu. The RIAA board has its own dedicated analog power supply making it an absolutely independent component. Pretty much like a stand alone phono preamplifier but sharing the same case and user interface.

The Digital input board adds 6 inputs accommodating all modern digital interfaces. AES, SPDIF, Toslink, USB, Ethernet and Bluetooth. This input module has the

ability to apply different filters and to upsample the signal for the DACs keeping it always with the optimal data rate and format making it the truly universal digital input module. All data is re-clocked to the high precision internal clock generator. The DAC is based on the Maximinus multi-bit R2R module offering similar tonal rendition and lifelike dynamics. It is realized as a separate card allowing upgrades when new technologies become available. The integrated network player board supports DLNA, Roon, TIDAL and DSD and is software upgradable on its own.

ARES has separate power supplies to power the digital and analog circuits independent from each other and completely separate from the power amplifiers.

The modularity of the system lets you grow as you need and to keep it current for long time to come.

Specifications

Inputs

- 3x RCA connectors (one convertible to phono)
- 1 x AES/EBU (XLR) (optional)
- 1 x TOSLINK (optic) (optional)
- 1 x USB (optional)

- RJ45 Ethernet (optional)

Outputs

- 120W/8Ohm 200W/4Ohm

Power supply

- 115 or 230V

Power consumption

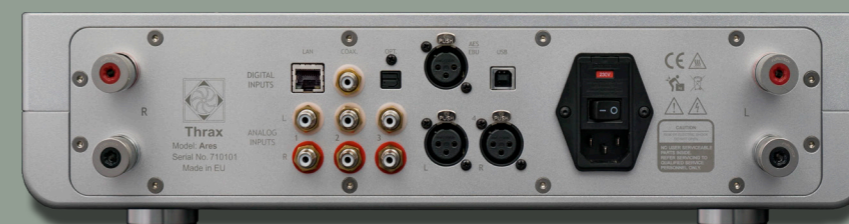
- 500W max

Weight

- 23 Kg

Dimensions

- 432Wx400Dx120H mm



Thrax Enyo

Modular Audiophile System



ENYO is a reference integrated vacuum tube amplifier with a digital subsystem. It is a complete solution for your home audio needs, just add speakers.

Features

- ENYO features two pure tube power amplifiers developed from the ground up using our long experience designing tube circuits.
- The amplifier is fully differential push pull design with a special cathode feedback ultra linear output stage.
- In the design we use custom double C core output transformer of the highest quality
- Vibration proof military transmission pentodes.
- The amplifiers are powered by choke filtered power supply with silicon carbide rectification.
- The absence of global feedback contributes to the exemplary transparency and speed.
- In it's most basic configuration ENYO could be used as a power amplifier in an existing system.
- Input is fully balanced relay selector and switched resistor volume control
- RIAA input module for MM/MC cartridges.
- Digital input board supporting ALL current digital interfaces



Technology

Enyo brings pure vacuum tube amplification that has a musical quality unmatched by any other technology to the connected digital age.

The level of integration is unprecedented having all possible digital and analog inputs optimized to feed directly reference class tube power amplifiers making component mismatch a thing of the past while removing all cables and boxes around the living room.

The RIAA module when added to the input board converts the first RCA input to a Moving Magnet and Moving Coil phono stage, allowing you to connect your turntable direct.

Enyo's digital input board accommodates all modern digital interfaces: AES, SPDIF, Toslink, USB, Ethernet and Bluetooth inputs. This input module features different filters and upsampling algorithms to supply the DACs always with the optimal data rate and format making it the truly universal digital input module.

All data is re-clocked to the high precision internal clock generator.

The DAC module is a multi-bit R2R converter developed on the basis of the Maximinus DAC offering similar tonal rendition and lifelike dynamics. It is realized as a separate card allowing upgrades when new technologies become available.

The integrated network player board supports AirPort, DLNA, Roon, TIDAL and DSD streaming via Ethernet and is upgradable on it's own.

So you get a multi-bit DAC, an Up-sampler, a Network player, a Phono preamplifier and tube power amplifier in a single box. Each designed to work with the other in the most optimal way. Getting rid of cables multiple remotes and boxes scattered across the room.

The modularity of the system let's you grow as you need and to keep it current for long time to come.

Specifications

Digital Inputs

- 1x RJ45 Network (LAN)
- 1x COAX (RCA),
- 1x Toslink
- 1x AES (XLR)

Outputs

- 1x USB
- Wireless Bluetooth 4.2
- Analog Inputs
- 3x RCA (unbalanced),
- 1x XLR (balanced)

Power supply

- 4 and 8 Ohm
- 115 or 230V

Power consumption

- 300W

Weight

- 30 Kg

Dimensions

- 440Wx480Dx190H mm



Thrax Lyra

Two Way Loudspeaker system



Lyra is a unique 2-way speaker system. It features a new breed of high frequency driver loaded with a very special horn system, complimented by 2 magnesium diaphragm mid/bass drivers in a all aluminium ported enclosure.

Features

- Two way passive loudspeaker system
- Based on d'Apollito MTM configuration
- Extremely solid entirely aluminum enclosure
- Internal bracing and damping
- A custom ring diaphragm compression tweeter
- A proprietary ultra short horn with shaped directivity
- 1500Hz crossover point
- Two low distortion magnesium cone mid/woofers
- Wax impregnated foil wound inductors in crossover
- Silver capacitors on tweeter
- Sealed and potted crossover assembly
- Furutech binding posts
- Dedicated stand

Technology

Lyra features a solid aluminum carved front panel incorporating a horn with specific directivity and frequency response as to perfectly match the directivity of the adjacent woofers. The geometry of the front plate is such that it is time aligned between the tweeter and woofers.

Thrax uses a custom designed ring diaphragm compression driver with lower than usual compression ratio. The combination features 112db/Watt/1m sensitivity and a very low resonance allowing the effective use to below 1500Hz. This driver/horn implementation allows for very high sound pressure levels with extremely low distortion without any spurious noises. Being capable of handling extreme power and unprecedented sound pressure levels without compression reveals the true dynamics and texture of the music.

The magnesium diaphragm woofers chosen are able to match the speed and clarity of the tweeter at

the expense of a cone break-up mode in the upper midrange, so utmost care has been taken to ensure this resonance never gets excited.

The speaker system features an uncommonly high sensitivity of 90db/Watt/1m making it usable with lower power amplifiers or in very big rooms.

Bass extension is very generous considering the size of the speaker and it's efficiency. It is able to sustain severe power levels without compression.

The filters are potted in special resin to prevent vibration and are constructed using resonance free foil wound inductors and premium Polypropylene capacitors.

The all aluminum body is internally damped for vibrations and resonance.

Lyra is clearly styled as a Thrax family product with a dedicated stand developed for optimum performance and appearance.

Specification

- **Impedance** : 4Ω
- **Max Power Handling**: 250W
- **Dimensions**: 210W x 385D x 520H mm
- **Weight**: 35Kg
- **Sensitivity**: 90db/1m/2.83V
- **Frequency band**: 34~20 000Hz



Thrax

Model: Lyra

Serial No.: 5101117

Made in EU



Thrax Basus

Motional Feedback Bass System



Basus - universal active subwoofer system for music.

Features

- Custom 15" Driver with 2 separate magnetic systems
- Motional feedback via magnetic sensor
- 1kW ClassD power amplifier
- Built in line level crossover
- Adjustable via Switches for perfect repeatability
- Supporting XLR and RCA I/O
- Adjustable slope
- Adjustable Q
- Very low group delay
- Solid aluminum Case built like a tank

Technology

Basus uses a 15" bass driver with secondary magnetic circuit used for motional feedback giving unprecedented control and damping via the proprietary control electronics. The use of sealed solid metal enclosure ensured utmost rigidity and resonance free operation with minimal group delay when driven by the 1 kilowatt built in power amplifier.

The integrated active crossover system with switch selectable preset frequencies and adjustable levels allows integration with any speaker/amplifier combination, making Basus the ultimate universal woofer. Undistorted and timely delivered bass at high enough levels creates a different perception of music.

Has to be experienced to be believed.

Specification

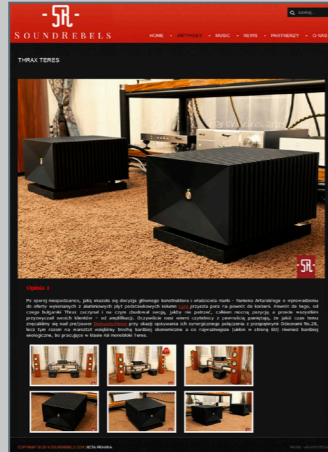
- **Crossover frequencies at 12db/Octave**
80,100,125,160,200,250Hz
- **Tilt type EQ** +/- 6db at 20Hz and 20kHz in 1db steps
- **Level adjust** +/- 6db
- **XLR and RCA inputs and outputs**
- **Driver** 15" custom dual magnetic system with 75mm VC
- **Amplifier module:** 1kW classD
- **Frequency response bandwidth:** 20-250Hz +/- 2db
- **Weight:** 130kg
- **Dimensions:** 450Wx450Dx800H mm



Reviews



HI-FI STATEMENT
June/2017



SOUNDREBELS
June/2016



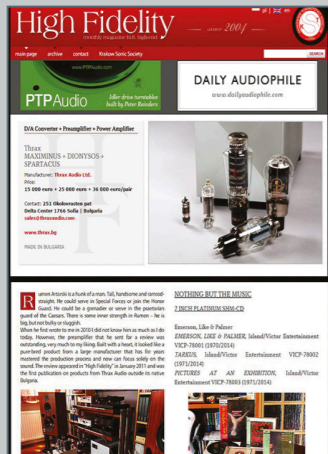
AUDIO ESOTERICA
Aug/2016



HI-FI CHOICE MAGAZINE
Dec/2015



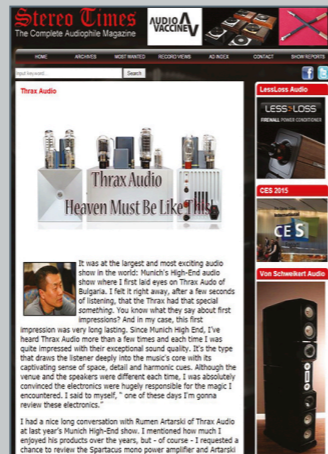
HIFICRITIC
Oct-Nov/2014



HIGH FIDELITY
Aug/2014



POSITIVE FEEDBACK
Aug/2014



STEREO TIMES
Aug/2014



STEREOPHILE
July/2013



STEREOPHILE
Dec/2013



SIXMOONS.COM
Mar/2013



HIFICRITIC
Oct/2012

For detailed information, please visit: <http://Thrax.bg>



Thrax Audio Ltd.

251 Okolovrasten Pat, 1766 Sofia, Bulgaria / Tel.: +359 2 988 9555 / Fax: +359 2 988 9556
Mobile: +359 888 561 269 / E-mail: sales@thraxaudio.com / Internet: www.thraxaudio.com